

IMPROVING SERVICES FOR ADOLESCENTS AND ADULTS WITH AUTISM

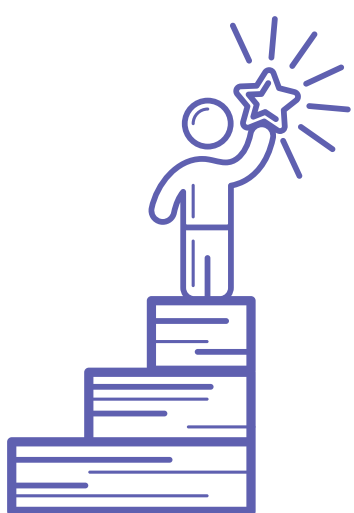


The Autism Intervention Research Network on Behavioral Health (AIR-B) is seeking community partners to implement the Self-Determined Learning Model of Instruction (SDLMI).

WHAT IS SELF-DETERMINATION?

Self-determination is about acting or causing things to happen to you.

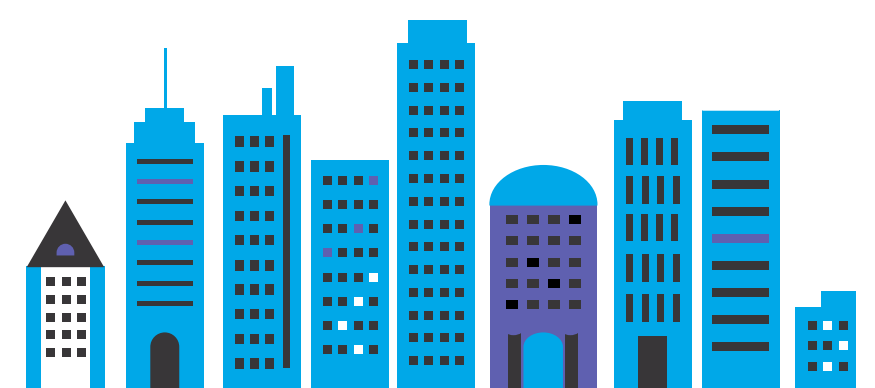
SELF-DETERMINATION IS LINKED TO:



Greater
academic
achievement



Increased
outcomes after
high school

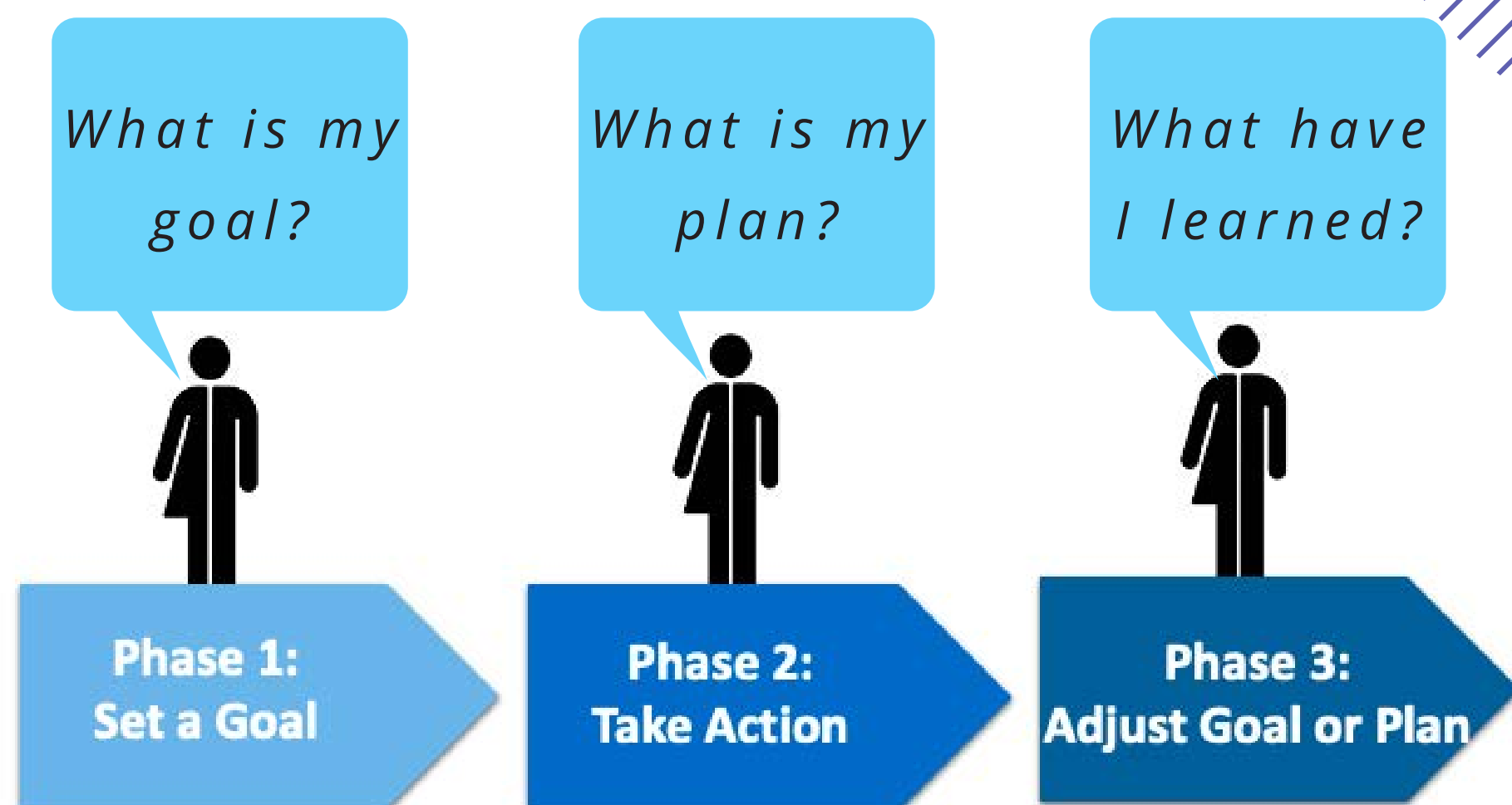


Enhanced
community
participation

WHAT IS SDLMI?

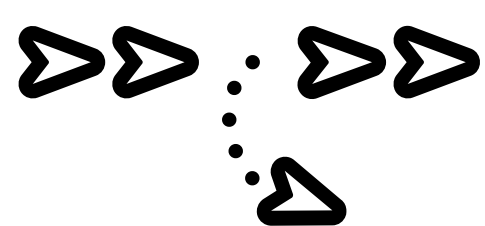
Teaching model that enables providers to teach students to:

- Make **choices** and **decisions** about setting a goal
- Develop action **plans** for academic or other goals
- **Self-monitor** and **self-evaluate** progress toward goal attainment
- **Adjust** the goal or plan



Research over the last 25 years has shown using the Self-Determined Learning Model of Instruction (SDLMI) enables students with and without disabilities to achieve self-selected goals and positive in-school and post-school outcomes

OUR TEAM IS READY TO



1. Adapt the SDLMI so it can be used in different school systems



2. Scale up the SDMLI and make it broadly available



3. Measure the sustained impact of the SDLMI in schools



4. Create partnerships to make sure the research is responsive to our community schools



UCLA, UC Davis, University of Washington, University of Pennsylvania, Drexel University, University of Kansas, University of Rochester

airbnetwork.org | selfdetermination.ku.edu