



YEAR 6: 2023-2024

SCHOOL MENTAL HEALTH

The School Mental Health Supplement to the Northwest MHTTC supports the school mental health workforce across Region 10, which includes the states of **Alaska, Idaho, Oregon, and Washington**.

For six years, the Northwest MHTTC School Mental Health team has served the school mental health workforce in Region 10 (Alaska, Idaho, Oregon and Washington) by curating timely and regionally-responsive events, developing tools for those in the field, and distributing critical resources. Thank you for your partnership over the years. We couldn't have done it without you and credit your engagement, feedback and support for our collective success. Access NWMHTTC files on the [UW SMART Center website](https://bit.ly/3TVauRI).



1,853



WEBSITE VISITORS

22



EVENTS



2,990
Participants



98%
Would recommend event
to a friend/colleague

17



ANNOUNCEMENTS

7



PRODUCTS



96%
Expect this event to
benefit them and/
or their community



95%
Were satisfied or
very satisfied with
the quality of events



SMART Center Newsletter sign up:
<https://bit.ly/3TVauRI>

This work was supported by grant SM 18-015 from the Department of Health and Human Services, Substance Abuse and Mental Health Services Administration and has ended as of September 2024. The University of Washington SMART Center is now the new hub for school mental health resources, visit: <https://smartcenter.uw.edu>

YEAR 6 HIGHLIGHTS

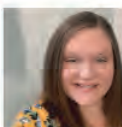
For more details on our Years 1-6 activities, visit our [SMART Center website](https://smartcenter.uw.edu).



SESSION 1 ▶ OCTOBER 9

SCHOOL MENTAL HEALTH THROUGH A MULTI-TIERED SYSTEM FRAMEWORK

CLYNITA GRAFENREED, Ph.D.
SCHOOL MENTAL HEALTH TRAINING AND TECHNICAL ASSISTANCE COORDINATOR
NORTHWEST MHITC/UW SMART CENTER



SESSION 2 ▶ NOVEMBER 29

COMPREHENSIVE UNIVERSAL SCREENING: A STATEWIDE APPROACH

MARI MEADOR, M.ED.
IMPLEMENTATION COACH
NORTHWEST MHITC/
UW SMART CENTER

RAYANN SILVA, M.ED.
SCHOOL MENTAL HEALTH TRAINING AND TECHNICAL ASSISTANCE COORDINATOR AND TRAINING UNIT COORDINATOR
NORTHWEST MHITC/UW SMART CENTER

KRISTI GREENAWAY DIRISHANG
WHOLE CHILD COORDINATOR
TACOMA PUBLIC SCHOOLS



SESSION 3 ▶ JANUARY 17

FOSTERING BELONGING IN STAFF RECRUITMENT AND RETENTION

NIKOLE Y. HOLLINS-SIMS, Ed.D.
EDUCATIONAL STRATEGIST/CONSULTANT
HOLLINS-SIMS CONSULTATION

SESSION 4 ▶ FEBRUARY 8

BECOMING - THE JOURNEY OF A CHANGE AGENT

NIKOLE Y. HOLLINS-SIMS, Ed.D.
EDUCATIONAL STRATEGIST/CONSULTANT
HOLLINS-SIMS CONSULTATION



SESSION 5 ▶ MARCH 20

BULLYING PREVENTION IN ELEMENTARY AND MIDDLE SCHOOLS: FOUNDATIONS AND STUDENT OWNERSHIP

RHONDA NESEE, Ph.D.
ASSISTANT PROFESSOR, DEPARTMENT OF SPECIAL EDUCATION AND CLINICAL SCIENCES PRINCIPAL INVESTIGATOR, EDUCATIONAL AND COMMUNITY SUPPORTS AFFILIATE FACULTY, PREVENTION SCIENCE PROGRAM
UNIVERSITY OF OREGON



SESSION 6 ▶ APRIL 17

BULLYING PREVENTION IN ELEMENTARY AND MIDDLE SCHOOLS: LEVERAGING EXPERTS IN YOUR BUILDING

SARA MCDANIEL, Ph.D.
PROFESSOR OF SPECIAL EDUCATION IN THE DEPARTMENT OF SPECIAL EDUCATION AND MULTIPLE ABILITIES AND DIRECTOR OF THE CENTER FOR INTERCONNECTED BEHAVIORAL AND MENTAL HEALTH SYSTEMS
UNIVERSITY OF ALABAMA



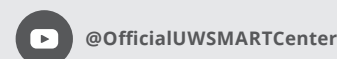
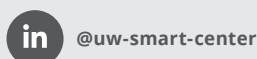
2024 SPEAKER SERIES

Promoting a Positive School Climate for Student Mental Health: Effective Data, Systems, and Practices

The six-session virtual series featured national and local experts discussing ways to create a positive school climate for students and staff. Through this series, we spotlighted evidenced-based strategies to address universal screening, staff retention, and bullying and its intersection with youth mental health and violence. Over 700 people participated in the series this year.

Presentation materials and recording are available on our website:

<https://smartcenter.uw.edu>



SMART Center Newsletter sign up:
<https://bit.ly/3TVauRI>

This work was supported by grant SM 18-015 from the Department of Health and Human Services, Substance Abuse and Mental Health Services Administration and has ended as of September 2024. The University of Washington SMART Center is now the new hub for school mental health resources, visit: <https://smartcenter.uw.edu>